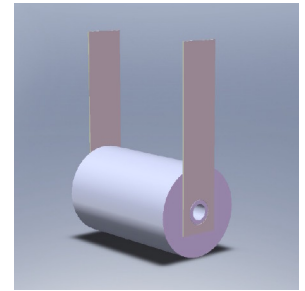
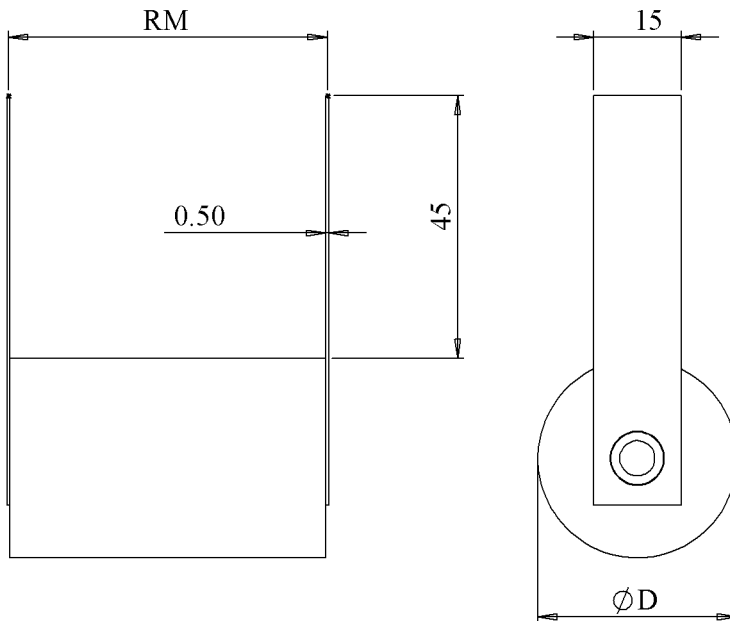


# 6194

## FILM-FOIL CAPACITORS

TYPE  
KP 25-052 bobs

Metal end faces  
Zinc + Tin alloy  
Tin welding at iron

Dielectric: Polypropylene + aluminium foil

Paramètre	Symbol	Value	Unit	Condition
Capacitance	C	0.52	µF	20°C, 1 kHz
Tolérance		- 0 / + 10	%	
Rated voltage	Un DC	250	VDC	
Rated voltage	Un AC	100	VAC	50 Hz to 10 kHz
Repetitive surge current	I cr. Max	600	A	
RMS Current	I <sub>eff</sub> max.	40	A <sub>eff</sub>	220 kHz
Tangente delta	tgδ	≤ 3 E-4		1 V / 1 kHz / 20 °C
Equivalent serie resistance	ESR	≤ 0.8	mΩ	1 V / 220 kHz / 20 °C
Stray inductance	ESL	≤ 15	nH	
Insulation resistance	Ri	> 100'000	MΩ	100 VDC - 1 min
Test voltage between terminals	U T1	500	VDC	1 min
Operating temperature		- 25 / + 55	°C	
Estimated operational life		> 100'000	H	40 ARMS / 220 kHz Un DC / 55°C temp. Amb.

Dimension	Symbole	Unité	Conditions
Diameter	D max	35	mm
	RM	55 ± 0.7	mm
	M2		
	M1		
	MC		
	Modification	Date	Visa émetteur

Condensateurs CH 1400 Yverdon-les-Bains  
Kondensatoren Tel.: ++41 24 445 66 88  
Capacitors Fax: ++41 24 445 66 89

**Leclanché**  
**Capacitors**  
A FISCHER & TAUSSCHKE COMPANY

HJJ

10.06.2013

faisab6194.XLS