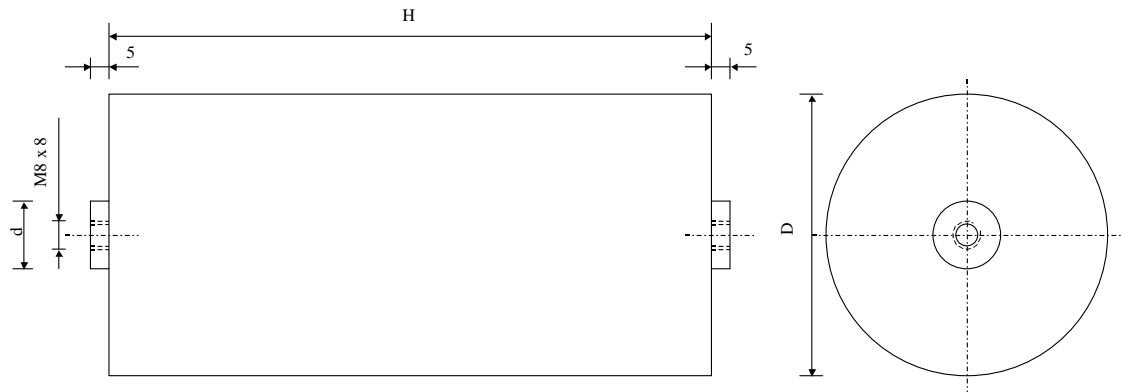


#5736

Discharge capacitors

PPMF 4000-2.5 uv K

Preliminary
Data Sheet

Dielectric of metallized polypropylene - Plastic tube

Polyurethane resin end sealing - Threaded outputs

Parameter	Symbol		Value	Unit	Condition
Capacitance	C		2.5	μF	1 V / 1 kHz
Tolerance			± 10	%	
Rated voltage	Un DC		40'000	VDC	
Repetitive surge current	I cr. max		10'000	A	
Tangent delta	tg δ		34	10 ⁻⁴	1 V / 1 kHz
Equivalent serie resistance	ESR		≤ 200	m Ω	10 kHz
Stray inductance	ESL		≤ 900	nH	
Insulation resistance	Ri x C		$> 30'000$	s	500 VDC - 1 min
Test voltage between terminals	U T1		80'000	VDC	60 s
Estimated operational life with inverse voltage max. 90 %			$> 100'000$	Pulses	40 kV / 10 kA
Dimension	Symbol			Unit	Conditions
Diameter	$\varnothing D$		110	mm	
Height	H		1200	mm	
Terminals					
Thread			M8 x 8	mm	
	$\varnothing d$		22		
	M1				
	M0				
	Modification	Date	Visa émetteur		

Condensateurs CH 1400 Yverdon-les-Bains
 Kondensatoren Tel.: ++41 24 445 66 88
 Capacitors Fax: ++41 24 445 66 89

Le Janché
Capacitors
A FROCHEN & VAUGHAN COMPANY

HJJ

25.06.2008

faisab5736.XLS