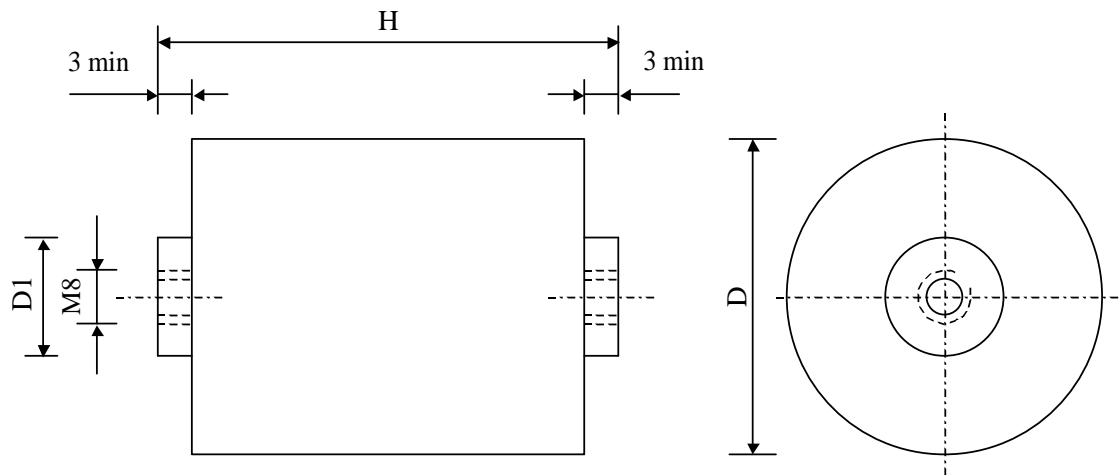


#5694

Power capacitors

PPM 250-1.5 uv K



Dielectric of metallized polypropylene - Plastic tube

Polyurethane resin end sealing - Threaded outputs

| Parameter                        | Symbol               |      | Value         | Unit             | Condition                           |
|----------------------------------|----------------------|------|---------------|------------------|-------------------------------------|
| Capacitance                      | C                    |      | 1.5           | $\mu\text{F}$    | 1 V / 1 kHz                         |
| Tolerance                        |                      |      | $\pm 10$      | %                |                                     |
| Rated voltage                    | $U_n \text{ DC}$     |      | 2500          | VDC              |                                     |
| $U_{\text{eff}}$                 | $U \text{ RMS}$      |      | 1000          | V                | RMS                                 |
| Peak to peak voltage             | $U \text{ pk-pk}$    |      | 2500          | V                | peak to peak                        |
| Permanently Current max          | $I \text{ RMS max.}$ |      | 50            | A RMS            | $f \geq 46 \text{ kHz}$             |
| Repetitive surge current         | $I \text{ cr. max}$  |      | 1500          | A                |                                     |
| Tangent delta dielectric         | $\text{tg} \delta_o$ |      | 2             | $10^{-4}$        |                                     |
| Serie resistance                 | RS                   |      | $\leq 1.3$    | $\text{m}\Omega$ |                                     |
| Stray inductance                 | ESL                  |      | $\leq 15$     | nH               |                                     |
| Insulation resistance            | $R_i \times C$       |      | $> 20'000$    | s                | 500 VDC - 1 min                     |
| Test voltage between terminals   | $U \text{ T1}$       |      | 4000          | VDC              | 60 s                                |
| Climatic category (IEC68)        |                      |      | 25/70/56      |                  |                                     |
| Estimated operational life (-3%) |                      |      | 200000        | h                | $U_n \text{ DC} - 70^\circ\text{C}$ |
|                                  |                      |      |               |                  |                                     |
|                                  |                      |      |               |                  |                                     |
| Dimension                        | Symbol               |      |               | Unit             | Conditions                          |
| Diameter                         | $\varnothing D$      |      | 75            | mm               |                                     |
| Height                           | H                    |      | $71 \pm 1$    | mm               |                                     |
| Terminals                        |                      |      |               |                  |                                     |
| Thread                           |                      |      | M8 x 10       | mm               |                                     |
|                                  | D1                   |      | 22            | mm               |                                     |
|                                  | M1                   |      |               |                  |                                     |
|                                  | M0                   |      |               |                  |                                     |
|                                  | Modification         | Date | Visa émetteur |                  |                                     |

Condensateurs CH 1400 Yverdon-les-Bains  
 Kondensatoren Tel.: ++41 24 445 66 88  
 Capacitors Fax: ++41 24 445 66 89

**Le Janché**  
**Capacitors**  
A FISCHER & TAUSSCHÉ COMPANY

HJJ

16.10.2007

faisab5694.XLS