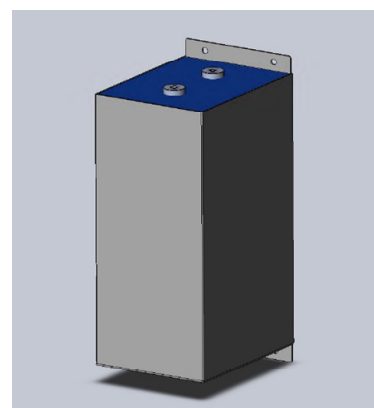
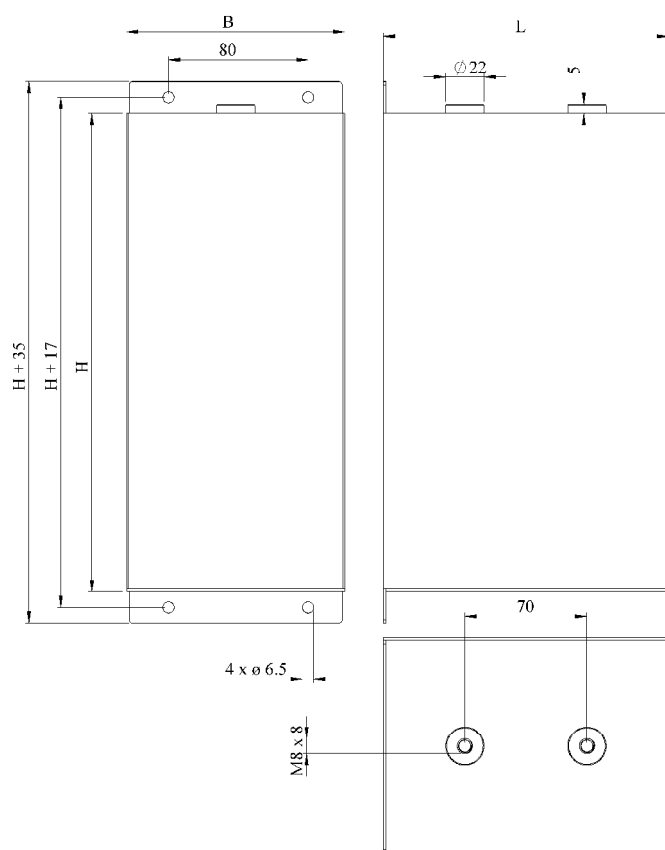


#6270

## Discharge Capacitors

PPMF 400-128.0 r1 K



Dielectric of metallized polypropylene

Threaded outputs

Resin end sealing

INOX case  
Grade 304 2B  
thick 1.5 mm  
TIG Welded

Parameter	Symbol	Value	Unit	Condition
Capacitance	C	128	$\mu\text{F}$	1 V / 100 Hz
Tolerance		$\pm 10$	%	
Rated voltage	Un DC	4'000	VDC	
Surge current	I cr. max	8'000	A	
Equivalent serie resistance	ESR	$\leq 4.0$	$\text{m}\Omega$	10 kHz
Stray inductance	ESL	$\leq 70$	nH	
Insulation resistance	Ri x C	$> 10'000$	s	500 VDC - 1 min
Test voltage between terminals	U T1	5'350	VDC	10 s
Test voltage between terminals to case	U T2	3'000	VAC	50 Hz - 1 min
Operating temp.		- 40 / + 70 °C		
Frequency max		$\leq 1$	Hz	
Estimated operational life 30°C		$> 5 \times 10^6$	Pulses	4000 V p-p max. 8 kA
Dimension	Symbol	Value	Unit	Conditions
Width	B	125	mm	
Length	L	150	mm	
Height	H	276	mm	
Thread		M8 x 8	mm	
Thread spacing		70	mm	
	M1			
	M0			
	Modification	Date	Visa émetteur	

Condensateurs CH 1400 Yverdon-les-Bains  
Kondensatoren Tel.: ++41 24 445 66 88  
Capacitors Fax: ++41 24 445 66 89

**Leclanché**  
Capacitors  
A FISCHER & TAUSSCHER COMPANY

HJJ

04.03.2014

faisab6270.XLS