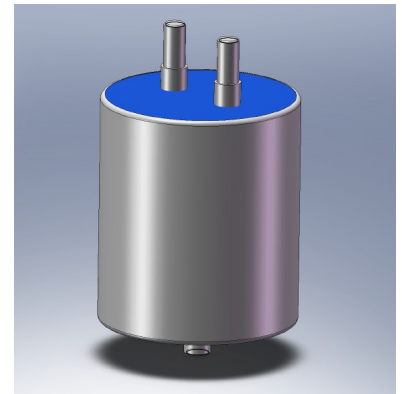
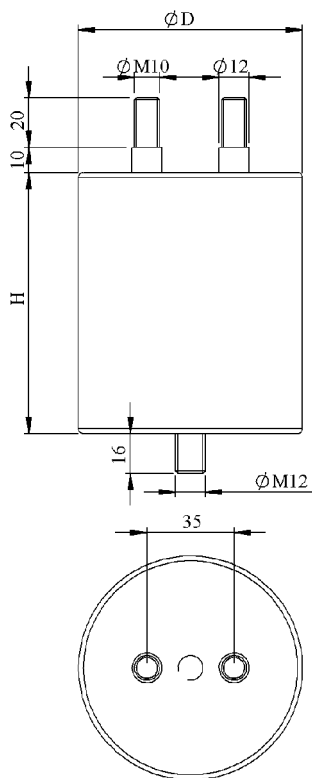


#6215

METALLIZED POLYPROPYLENE CAPACITORS

PAM 90-47.0 cv5 K



Dielectric of metallized polypropylene

Threaded outputs

Resin end sealing

Aluminium case

Parameter	Symbol	Value	Unit	Condition
Capacitance	C	47	μF	1 V / 1 kHz
Tolerance		± 10	%	
Rated voltage	Un AC	900	VAC	
RMS voltage	U RMS	640	VDC	
Surge voltage	Us	1500	V	
RMS Current permanent	I _{eff max.}	55	A _{eff}	10 kHz
Repetitive surge current	I _{cr. max}	3100	A	
Not repetitive surge current	I _s	7800	A	
Tangent delta	tg δ	≤ 10	10^{-4}	1 V / 1 kHz
Equivalent serie resistance	ESR	2.5	m Ω	1 V / 10 kHz
Stray inductance	ESL	≤ 110	nH	
Insulation resistance	R _i x C	$\geq 20'000$	s	500 VDC - 1 min
Test voltage between terminals	U T1	1150	VAC	50 Hz / 10 s
Test voltage terminals to case	U T2	2600	VDC	50 Hz / 10 s
Operating temp.		- 25 / + 85 °C		

Dimension	Symbol	Value	Unit	Conditions
Diameter	D	85	mm	
Height	H max	225	mm	
Terminals				
Thread		M10 x 20	mm	
Thread spacing	e	35 \pm 0.7	mm	
Fixing stud		M12 x 16	mm	

	M1			
	M0			
	Modification	Date	Visa émetteur	

Condensateurs CH 1400 Yverdon, Switzerland
 Kondensatoren Tel.: ++41 24 447 22 82
 Capacitors Fax: ++41 24 447 22 85

Leclanché
Capacitors
A FISCHER & TAUSSCH COMPANY

HJJ

www.Lcap.ch
 06.09.2013

capinfo@Lcap.ch
 faisab6215.XLS