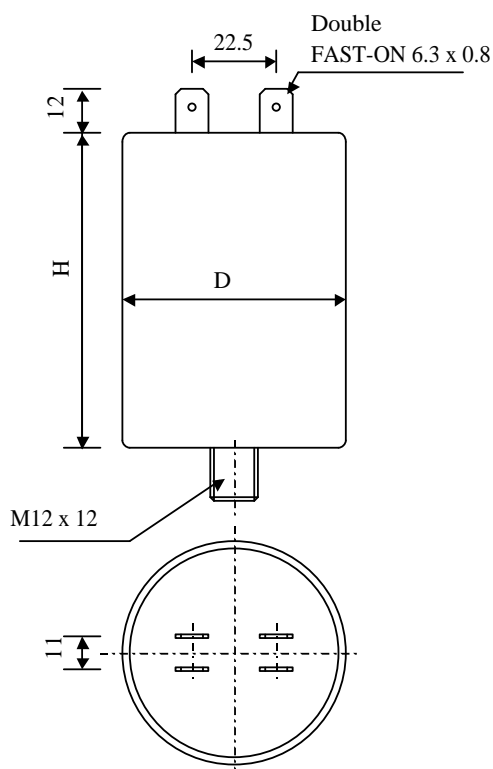


#6213

METALLIZED POLYPROPYLENE CAPACITORS

PAM 85-22.0 cv2d K



Dielectric of metallized polypropylene

Double FAST-ON 6.3 x 0.8 mm

Epoxy resin end sealing

Aluminium case

Parameter	Symbol	Value	Unit	Condition
Capacitance	C	22	μF	1 V / 1 kHz
Tolerance		± 10	%	
Rated voltage	Un AC	1200	VAC	
RMS voltage	U RMS	850	V RMS	
Surge voltage	Us	2100	V	
Repetitive surge current	I cr. max	760	A	
non repetitive surge current	Is	2280	A	
RMS current	I RMS	18	A	10 kHz
Tangent delta	tg δ	≤ 11	10^{-4}	1 V / 1 kHz
Equivalent serie resistance	ESR	≤ 6.2	m Ω	1 V / 10 kHz
Stray inductance	ESL	≤ 120	nH	
Test voltage between terminals	U T1	2580	VDC	10 s
Test voltage terminals to case	U T2	3000	VAC	50 Hz / 1 min
Operating Temperature		-25 to + 8	$^{\circ}\text{C}$	
Dimension	Symbol		Unit	Conditions
Diameter	D	60	mm	
Height	H	151	mm	
Terminals				
Double fast-on		6.3 x 0.8	mm	
fixing stud		M12 x 12	mm	
	M1			
	M0			
	Modification	Date	Visa émetteur	

Condensateurs CH 1400 Yverdon, Switzerland
 Kondensatoren Tel.: ++41 24 445 66 88
 Capacitors Fax: ++41 24 445 66 89

Lecan
Capacitors
A FISCHER & TAUSSICH COMPANY

HJJ

www.Lcap.ch
 04.09.2013

capinfo@Lcap.ch
 faisab6213.XLS