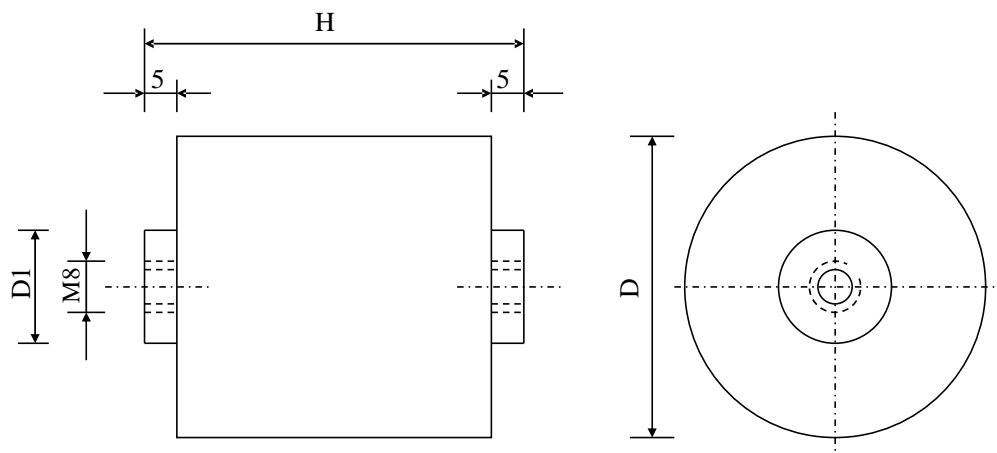


#6328

Sine wave capacitors

PAM 28-30.0 uv K



Dielectric of metallized polypropylene - Plastic tube polypropylene

Polyurethane resin end sealing - Threaded outputs

Parameter	Symbol		Value	Unit	Condition
Capacitance	C		30	μF	1 V / 1 kHz
Tolerance			±10	%	1 kHz to 20 kHz
Rated voltage	Un AC		280	V RMS	45 to 60 Hz
Permanent current	I <sub>eff</sub>		1C	A RMS	5 kHz to 50 kHz
Peak current rep.	I <sub>peak</sub>		40	A	
Maximum peak current	I <sub>s</sub>		180	A	
Tangent delta	tgδ		8	10 <sup>-4</sup>	1 kHz
Equivalent serie resistance	ESR		≤ 3.3	mΩ	10 kHz
Stray inductance	ESL		< 15	nH	
Insulation resistance	Ri x C		> 30'000	s	500 VDC - 1 min
Test voltage between terminals	U T1		1250	VDC	10 s
Test voltage terminals to case	U T2		2500	VAC	1 min.
Operating temperature			-40 / + 75 °C		
Storage temperature			-40 / + 85 °C		
Estimated operational life (-5%)		20 % / 75°C 80 % / 55 °C	> 223'000	h	277 V RMS 7 A RMS 29.5 A peak
Dimension	Symbol			Unit	Conditions
Diameter	ø D		63	mm	
Height	H		76 + 0 / -1	mm	
Terminals					
Thread			M8 x 8	mm	
	D1		22	mm	
	M1				
	M0				
	Modification	Date	Visa émetteur		

Condensateurs CH 1400 Yverdon, Switzerland  
 Kondensatoren Tel.: ++41 24 445 66 88  
 Capacitors Fax: ++41 24 445 66 89

**Leclanché**  
**Capacitors**  
A FISCHER & TALSCHER COMPANY

HJJ

www.Lcap.ch  
 12.09.2014

capinfo@Lcap.ch  
 faisab6328.XLS