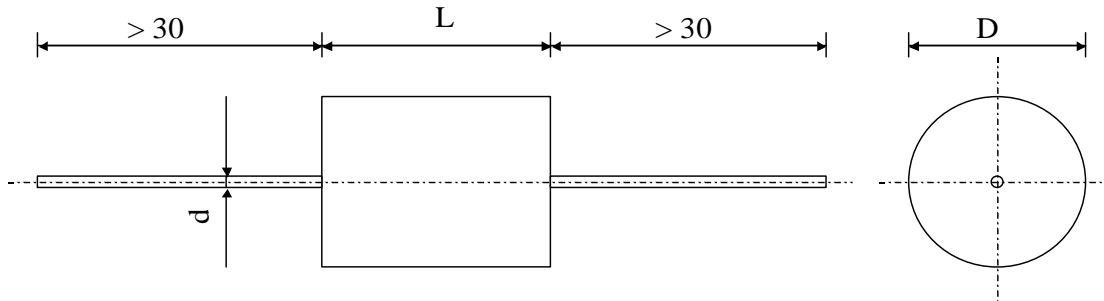


| | | |
|--------|--|--------------------------|
| # 5822 | METALLIZED POLYPROPYLENE + FILM-FOIL CAPACITORS | TYPE KPS 100-010 ds K |
|--------|--|--------------------------|



Dielectric: Polypropylene metallized + film + foil

Polyester wrapped UL 510 / Epoxy resin sealing UL 94-V0

| Paramètre | Symbol | Value | Unit | Condition |
|-----------------------------------|-----------------------|-----------|------------------|-----------------|
| Capacitance | C | 100 | nF | 20°C, 1 kHz |
| Tolérance | | 10 | % | |
| Rated voltage | Un DC | 1'000 | VDC | |
| Rated voltage | Un AC | 400 | VAC | |
| RMS Current | I _{eff} max. | 12 | A _{eff} | 100 kHz |
| Slope of voltage variation | du/dt max. | 5'500 | V/μs | max. repetitive |
| Repetitive surge current | I _{cr} max | 550 | A | max. repetitive |
| Tangent delta dielectric | tgδ _o | 2 E-4 | | |
| Serial resistance | R _s | 1.7 | mΩ | |
| Stray inductance | ESL | ≤ 40 | nH | |
| Insulation resistance | R _i | > 100'000 | MΩ | 100 VDC - 1 min |
| Test voltage between terminals | U T1 | 1'600 | VDC | 60 s. |
| Climatic category | | 55/85/56 | | |
| Estimated operational life (-3 %) | | 100'000 | h | Un / 70°C |

| Dimension | Symbole | Value | Unité | Conditions |
|-------------------|---------|-------|-------|------------|
| Diameter | D | 32 | mm | |
| Length | L | 20 | mm | |
| Terminals | | | | |
| Axial tinned wire | d | 1.0 | mm | |

| | | | | |
|---|--------------|------|---------------|--|
| Valeurs indicatives, sous réserve de modification | M2 | | | |
| | M1 | | | |
| | M0 | | | |
| | Modification | Date | Visa émetteur | |