

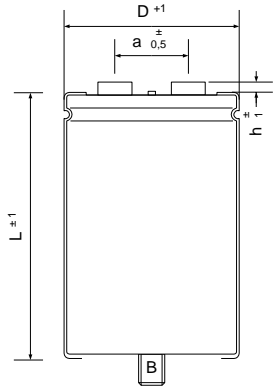
Leclanché Capacitors
48, av. de Grandson
1400 Yverdon, Switzerland



Tel. +41 24 445 66 88
Fax +41 24 445 66 89
capinfo@Lcap.ch
www.Lcap.ch

Drawing No. : 1026742-53567
created from : 10/03/2014 10:23:00

Part Number : GMXB22240050105



∅ D : 50 mm
L : 105 mm
a : 22 mm
h : 5 mm
B : M12
Terminals : M5

Electrical Parameters

Rated Capacitance (C_R) @ 100 Hz / 20 °C	2200 μ F	
Tolerance	±20 %	
Rated Voltage (U_R)	400 V	
Surge Voltage (U_S) max. 5 x 1 min / h	440 V	
Reverse Voltage (U_U) max. 1 s	2 V	
Leakage Current (I_L) @ U_R / 5 min / 20 °C	5280 μ A	
ESR typ. @ 100 Hz / 20°C	43 m Ω	
Tan δ typ. @ 100 Hz / 20°C	6 %	
Z max. @ 10 kHz / 20°C	35 m Ω	
ESL typ.	20 nH	
Rated Ripple Current (I_R) @ 100 Hz / 85 °C	8 A	
Useful life @ $I_R, U_R, 85$ °C	15000 h	
IEC Climatic category / Standards	40/085/56	IEC 60384-4
Applications		
Your article No.. / Project		