

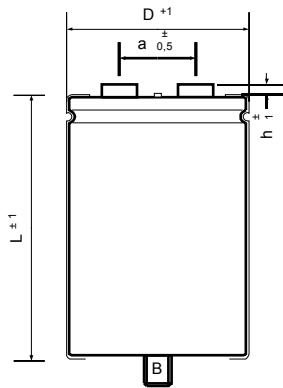
Leclanché Capacitors
48, av. de Grandson
1400 Yverdon, Switzerland



Tel. +41 24 445 66 88
Fax +41 24 445 66 89
capinfo@Lcap.ch
www.Lcap.ch

Drawing No. : 100011013
created from : hm 18/03/2013 12:31:00

Part Number : GMB50245075220



Ø D : 75 mm
L : 220 mm
a : 31,7 mm
h : 5 mm
B : M12 x 16

Terminals :

Electrical Parameter

Rated Capacitance (C_R) @ 100 Hz / 20 °C	5000 μ F	
Tolerance	-10 +30 %	
Rated Voltage (U_R)	450 V	
Surge Voltage (U_S) max. 5 x 1 min / h	495 V	
Reverse Voltage (U_U) max. 1 s	2 V	
Leakage Current (I_L) @ U_R / 5 min / 20 °C	13500 μ A	
ESR typ. @ 100 Hz / 20°C	19 m Ω	
Tan δ typ. @ 100 Hz / 20°C	6 %	
Z max. @ 10 kHz / 20°C	16 m Ω	
ESL typ.	20 nH	
Rated Ripple Current (I_R) @ 100 Hz / 85 °C	9,8 A	
Useful life @ I_R , U_R , 85 °C	8000 h	
IEC Climatic category / Standards	40/085/56	IEC 60384-4
Applications	General Industrial	
Your article No. / Project		