

Leclanché Capacitors
48, av. de Grandson
1400 Yverdon-Switzerland



Tel. +41 24 445 66 88
Fax +41 24 445 66 89
e-mail: <mailto:capinfo@lcap.ch>
www.lcap.ch

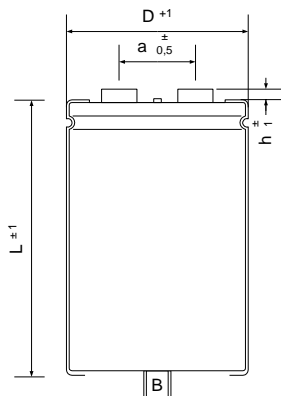
Customer :

Drawing No. 100007700:
created from : 08/04/2010 18:31:00

Seite 1 / 1

Typ : GMB82245075222

RoHS Compliant



∅ D : 75 mm
L : 222 mm
a : 31,7 mm
h : 4 mm
B : M 12 x 16
Terminals : M 6

Electrical Parameters

Rated Capacitance (C_R) @ 100 Hz / 20 °C	8200 μ F	
Tolerance	±20 %	
Rated Voltage (U_R)	450 V	
Surge Voltage (U_S) max. 5 x 1 min / h	495 V	
Reverse Voltage (U_U) max. 1 s	2 V	
Leakage Current (I_L) @ U_R / 5 min / 20 °C	11858 μ A	
ESR typ. @ 100 Hz / 20°C	13 m Ω	
Tan δ typ. @ 100 Hz / 20°C	7 %	
Z max. @ 10 kHz / 20°C	11 m Ω	
ESL typ.	20 nH	
Rated Ripple Current (I_R) @ 100 Hz / 85 °C	18,5 A	
Useful life @ $I_R, U_R, 85$ °C	10000 h	
IEC Climatic category / Standards	40/85/56	IEC 60384-4
Applications	industrial	
Your article No.. / Project		